

# Tufts Clinical and Translational Science Institute

---

**REDCap Feature Spotlight**

**EXTERNAL MODULES**

OCTOBER 2019

**Tufts | CTSI**

Tufts Clinical and Translational Science Institute



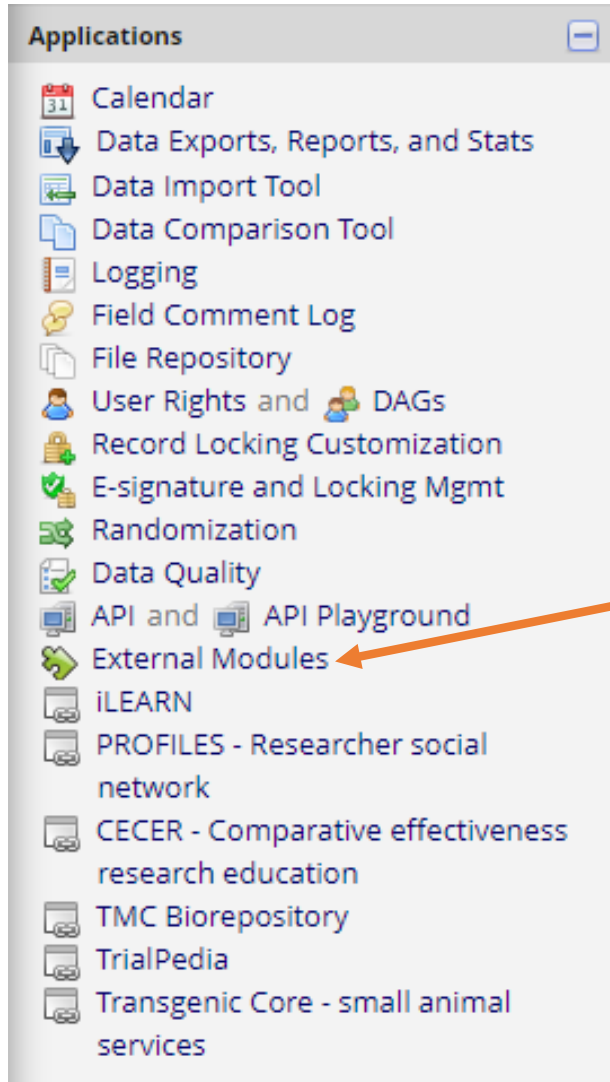
- Tufts CTSI is committed to providing the best expert advice and user experience to investigators who use our services.
- As a part of this commitment, we will now be providing you with the frequent ***REDCap Feature Spotlight***.
- In October 2019 ***Feature Spotlight*** brings you the **External Modules**, which are feature add-ons that extend the functionality, provide customizations and enhancements for REDCap's existing behavior, and do not change the core REDCap project functionality or workflow.

# Accessing External Modules in REDCap

# External Modules

REDCap now offers access to **External Modules**. These are not developed by the REDCap development team at Vanderbilt, but are instead contributed by members of the REDCap consortium. When enabled, external modules add options to your projects to enhance the look, feel and customizability, and some are quite powerful!

You can access external modules via the button on the **left-hand column**; clicking it allows you to **view modules in use**, and **view available modules administrators can set up**.



 View available modules

**Currently Enabled Modules**

Search enabled modules

# View Enabled Modules


Once on the External Modules page, you can see what modules you have enabled for the project.

The **View Available Modules** button shows modules that an administrator can add per request.

## Currently Enabled Modules


### Field Notes Display - v1.1.2

Provides alternative display modes for field notes. This module adds an action tag @FIELD-NOTES-DISPLAY that accepts the following inputs: 'hover' - displays the text when the field is hovered over; 'tooltip' - places a help icon, which displays the text in a tooltip when hovered over; 'popover' - places a help icon, which displays the text in a popover when clicked. See the complete **documentation** at [https://github.com/ctsit/field\\_notes\\_display](https://github.com/ctsit/field_notes_display).

 [View Documentation](#)


### QR Code Shortcut - v1.1.1

Provides a shortcut to generate a survey QR code for a new data entry. **See full documentation here.**

 [View Documentation](#)

### Sticky Matrix Headers - v1.2.0

Makes the matrix header for a matrix of fields always visible (as long as the matrix is visible) - for surveys only.

 [View Documentation](#)

## Available Modules



### Instant Field Concatenation v1.2.1

This module concatenates fields and places the result in another field instantly. It uses JavaScript and not PHP. It happens upon the user leaving the field.

 [View available modules](#)

**Tufts** | **CTSI**

Tufts Clinical and Translational Science Institute

# Enabled by Default vs. Discoverable

## Global external modules:

When an external module is determined to provide utility for a large portion of REDCap users it will be **enabled by REDCap administrators**, meaning the improvements they bring will be activated for all projects.

## Custom external modules

These modules are only applicable for a small number of users. Once implemented it becomes **discoverable**, and a REDCap administrator can add it to your project

### Currently Enabled Modules

#### Field Notes Display - v1.1.2

Provides alternative display modes for field notes. This module adds an action tag @FIELD-NOTES-DISPLAY that accepts the following inputs: 'hover' - displays the text when the field is hovered over; 'tooltip' - places a help icon, which displays the text in a tooltip when hovered over; 'popover' - places a help icon, which displays the text in a popover when clicked. See the complete **documentation** at [https://github.com/ctsit/field\\_notes\\_display](https://github.com/ctsit/field_notes_display).

[View Documentation](#)

#### Instant Field Concatenation - v1.2.1

This module concatenates fields and places the result in another field instantly. It uses JavaScript and not PHP. It happens upon the user leaving the field.

[View Documentation](#)

[Configure](#)

#### QR Code Shortcut - v1.1.1

Provides a shortcut to generate a survey QR code for a new data entry. **See full documentation here.**

[View Documentation](#)

#### Sticky Matrix Headers - v1.2.0

Makes the matrix header for a matrix of fields always visible (as long as the matrix is visible).

[View Documentation](#)

**This module had to be added by an administrator before being visible with the rest**

# Available Modules

- **Global external modules** that are currently **enabled for all projects**
  - **Sticky Matrix Headers** - prevents matrix headers from being cut off by scrolling the window in surveys
  - **Field Notes Display** - Provides alternative display modes for field notes. This module adds an action tag @FIELD-NOTES-DISPLAY that accepts the following inputs: 'hover', 'tooltip' and 'popover'
  - **QR Code Shortcut** - Provides a shortcut to generate a survey QR code for a new data entry.
- **Additional external modules can be found by clicking the “View Available Modules” button.** These, however, will have to be enabled by an administrator based on project needs. Right now, the only module being made **discoverable** is **Instant Field Concatenation**. This module concatenates fields and places the result in another field instantly.

# Global External Modules: Sticky Matrix Headers

This module prevents matrix headers from being cut off by scrolling the window in surveys

## Matrix Field

Please complete the survey below.  
Thank you!

How Well do the Following Features Work?

	Very Well	Functional	Broken	
1) REDCap in General	<input type="radio"/>	<input type="radio"/>	<input type="radio"/>	U
2) Online Designer	<input type="radio"/>	<input type="radio"/>	<input type="radio"/>	U
3) Data Dictionary	<input type="radio"/>	<input type="radio"/>	<input type="radio"/>	U
4) Forms	<input type="radio"/>	<input type="radio"/>	<input type="radio"/>	U
5) Surveys	<input type="radio"/>	<input type="radio"/>	<input type="radio"/>	U
6) Survey Queues	<input type="radio"/>	<input type="radio"/>	<input type="radio"/>	U
7) Text Fields	<input type="radio"/>	<input type="radio"/>	<input type="radio"/>	U
8) Checkbox Fields	<input type="radio"/>	<input type="radio"/>	<input type="radio"/>	U
9) Radio Fields	<input type="radio"/>	<input type="radio"/>	<input type="radio"/>	U
10) Descriptive Fields	<input type="radio"/>	<input type="radio"/>	<input type="radio"/>	U
11) Dropdown Menus	<input type="radio"/>	<input type="radio"/>	<input type="radio"/>	U
12) Calculated Fields	<input type="radio"/>	<input type="radio"/>	<input type="radio"/>	U
13) Note Fields	<input type="radio"/>	<input type="radio"/>	<input type="radio"/>	U

## Without Module

1) Online Designer	<input type="radio"/>	<input type="radio"/>	<input type="radio"/>	U
3) Data Dictionary	<input type="radio"/>	<input type="radio"/>	<input type="radio"/>	U
4) Forms	<input type="radio"/>	<input type="radio"/>	<input type="radio"/>	U
5) Surveys	<input type="radio"/>	<input type="radio"/>	<input type="radio"/>	U
6) Survey Queues	<input type="radio"/>	<input type="radio"/>	<input type="radio"/>	U
7) Text Fields	<input type="radio"/>	<input type="radio"/>	<input type="radio"/>	U
8) Checkbox Fields	<input type="radio"/>	<input type="radio"/>	<input type="radio"/>	U
9) Radio Fields	<input type="radio"/>	<input type="radio"/>	<input type="radio"/>	U
10) Descriptive Fields	<input type="radio"/>	<input type="radio"/>	<input type="radio"/>	U
11) Dropdown Menus	<input type="radio"/>	<input type="radio"/>	<input type="radio"/>	U
12) Calculated Fields	<input type="radio"/>	<input type="radio"/>	<input type="radio"/>	U
13) Note Fields	<input type="radio"/>	<input type="radio"/>	<input type="radio"/>	U
14) Section Headers	<input type="radio"/>	<input type="radio"/>	<input type="radio"/>	U
15) Matrix Fields < 15 Questions	<input type="radio"/>	<input type="radio"/>	<input type="radio"/>	U
16) Matrix Fields >15 Questions	<input type="radio"/>	<input type="radio"/>	<input type="radio"/>	U
17) External Modules (General)	<input type="radio"/>	<input type="radio"/>	<input type="radio"/>	U
18) Sticky Matrix Headers	<input type="radio"/>	<input type="radio"/>	<input type="radio"/>	U

Option Labels Not Visible

## With Module

	Very Well	Functional	Broken	
5) Surveys	<input type="radio"/>	<input type="radio"/>	<input type="radio"/>	U
6) Survey Queues	<input type="radio"/>	<input type="radio"/>	<input type="radio"/>	U
7) Text Fields	<input type="radio"/>	<input type="radio"/>	<input type="radio"/>	U
8) Checkbox Fields	<input type="radio"/>	<input type="radio"/>	<input type="radio"/>	U
9) Radio Fields	<input type="radio"/>	<input type="radio"/>	<input type="radio"/>	U
10) Descriptive Fields	<input type="radio"/>	<input type="radio"/>	<input type="radio"/>	U
11) Dropdown Menus	<input type="radio"/>	<input type="radio"/>	<input type="radio"/>	U
12) Calculated Fields	<input type="radio"/>	<input type="radio"/>	<input type="radio"/>	U
13) Note Fields	<input type="radio"/>	<input type="radio"/>	<input type="radio"/>	U
14) Section Headers	<input type="radio"/>	<input type="radio"/>	<input type="radio"/>	U
15) Matrix Fields < 15 Questions	<input type="radio"/>	<input type="radio"/>	<input type="radio"/>	U
16) Matrix Fields >15 Questions	<input type="radio"/>	<input type="radio"/>	<input type="radio"/>	U
17) External Modules (General)	<input type="radio"/>	<input type="radio"/>	<input type="radio"/>	U
18) Sticky Matrix Headers	<input type="radio"/>	<input type="radio"/>	<input type="radio"/>	U
19) Tufts CTSI Tips and Tricks	<input type="radio"/>	<input type="radio"/>	<input type="radio"/>	U
20) Monthly REDCap Improvements	<input type="radio"/>	<input type="radio"/>	<input type="radio"/>	U

Option Labels Always Visible



# Global External Modules: Field Notes Display

### Edit Field

You may add a new project field to this data collection instrument by completing the fields below and clicking the Save button at the bottom. When you add a new field, it will be added to the form on this page. For an overview of the different field types available, you may view the [Field Types video \(4 min\)](#).

**Field Type:** Text Box (Short Text, Number, Date/Time, ...) ▼

**Field Label**  
What is the answer?

**Action Tags / Field Annotation** (optional)  
Learn about [@ Action Tags](#) or [using Field Annotation](#)

**Variable Name** (utilized in logic, calcs, and exports)  
what  Enable auto naming of variable based upon its Field Label?  
ONLY letters, numbers, and underscores

How to use [Smart Variables](#) [Piping](#)

**Validation?** (optional) ---- None ----  
- or -  
**Enable searching within a biomedical ontology** ?  
-- choose ontology to search --

**Required?\***  No  Yes  
\* Prompt if field is blank

**Identifier?**  No  Yes  
Does the field contain identifying information (e.g., name, SSN, address)?

**Custom Alignment** Right / Vertical (RV) ▼  
Align the position of the field on the page

**Field Note** (optional) Put your answer here!  
Small reminder text displayed underneath field

- You can now use the action tag **@FIELD-NOTES-DISPLAY** to change the settings of fields notes.
- By default, field notes are displayed **under the field they are part of.**

What is the answer?

Put your answer here!

# Global External Modules: Field Notes Display

- **@FIELD-NOTES-DISPLAY="hover"** turns the field note into hover text

**Action Tags / Field Annotation (optional)**  
@FIELD-NOTES-DISPLAY="hover"  
Learn about [@ Action Tags](#) or [using Field Annotation](#)

What is the answer?

Put your answer here!

- **@FIELD-NOTES-DISPLAY="tooltip"** adds a "?" next to the field you can hover over

**Action Tags / Field Annotation (optional)**  
@FIELD-NOTES-DISPLAY="tooltip"  
Learn about [@ Action Tags](#) or [using Field Annotation](#)

What is the answer?

Put your answer here!

- **@FIELD-NOTES-DISPLAY="popover"** adds a similar mark you can click on

**Action Tags / Field Annotation (optional)**  
@FIELD-NOTES-DISPLAY="popover"  
Learn about [@ Action Tags](#) or [using Field Annotation](#)

What is the answer?

Put your answer here!

# Global External Modules: QR Code Shortcut

- A new button in the **upper right corner** of a form allows you to generate a **QR Code**, which, when scanned, will take users to that record.

✓ The survey QR code has been generated successfully.

Actions: [Modify instrument](#) [Download PDF of instrument\(s\)](#) [VIDEO: Basic data entry](#)

[Test Modules!](#)

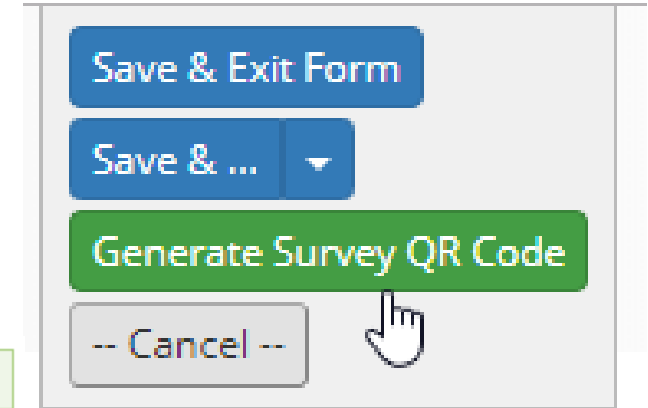
Data Access Group: [\[No Assignment\]](#) ?

Invitation status: [Survey options](#)



**Tufts | CTSI**

Tufts Clinical and Translational Science Institute



# Discoverable Modules: Instant Field Concatenation

- This module allows you to **concatenate text fields into other text fields instantly**. It uses JavaScript and not PHP, and activates when the user leaves the field.

[+ Enable a module](#)

**Currently Enabled Modules**

---

**Instant Field Concatenation - v1.2.1**  
This module concatenates fields and places the result in another field instantly. It uses JavaScript and not PHP. It happens upon the user leaving the field.

[View Documentation](#) [Configure](#) [Disable](#)

- Upon request, we will activate the **Instant Field Concatenation** module
- Once activated, you will see it on your list of **Currently Enabled Modules**

# Discoverable Modules: Instant Field Concatenation

Press “**Configure**” to access the settings

Select the “**Destination**” field (where you want the result placed) and the “**Source**” fields (the ones being put together)

Pressing the “+” signs allows you to add in as many fields as you want

Configure Module: Instant Field Concatenation ×

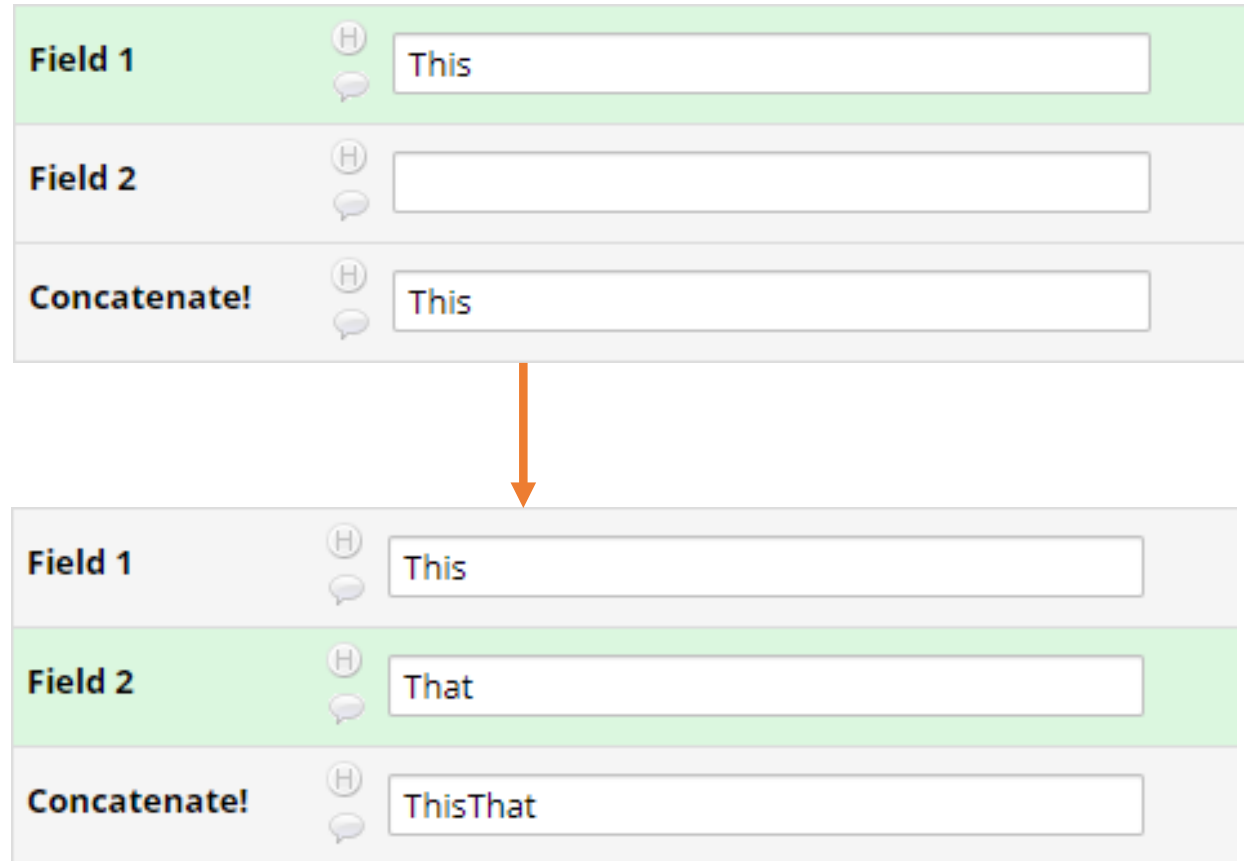
Project Settings	Value
1. Concatenated Field: <span>+</span>	
1. Destination Field: <small>* must provide value</small>	concatenate - Concatenate! ▼
1.1. Source Fields (in order): <small>* must provide value</small>	text_1 - Field 1 <span>+</span>
1.2. Source Fields (in order): <small>* must provide value</small>	text_2 - Field 2 <span>+</span> <span>-</span>
1. Put Spaces Between the Items?:	<input type="checkbox"/>

Cancel Save

# Discoverable Modules: Instant Field Concatenation

Once set up, every time one of the **source** fields is modified, the module will automatically update the destination field!

**Please note** this only works with **text** and **note** fields



# CONTACT US!

To request the addition of an External Module to your project, please contact the REDCap administrator and identify the project to which you would like to apply it.

For questions, concerns, or external module requests, please contact us at:  
[informatics@tuftsctsi.org](mailto:informatics@tuftsctsi.org)

